



Location: CMA1b - Harbour Grand Hotel Boundary Wall

Report on 24-hour TSP monitoring

Action Level ( $\mu\text{g}/\text{m}^3$ ) - 176.7

Limit Level ( $\mu\text{g}/\text{m}^3$ ) - 260

Date	Sampling Time	Weather Condition	Filter paper no.	Filter Weight, g		Elapse Time, hr		Sampling Time, hr	Flow Rate, $\text{m}^3/\text{min}$			Total Volume, $\text{m}^3$	TSP Level, $\mu\text{g}/\text{m}^3$
				Initial	Final	Initial	Final		Initial, $Q_{si}$	Final, $Q_{sf}$	Average		
28-Dec-17	8:00	Fine	23558	2.6245	2.7718	11066.42	11090.42	24.00	1.19	1.19	1.19	1715	85.9
3-Jan-18	8:00	Fine	23654	2.6499	2.7702	11093.42	11117.42	24.00	1.19	1.19	1.19	1713	70.2
9-Jan-18	8:00	Cloudy	23775	2.6082	2.6822	11120.42	11144.42	24.00	1.21	1.20	1.21	1737	42.6
13-Jan-18	8:00	Fine	23859	2.6451	2.7736	11147.42	11171.42	24.00	1.20	1.20	1.20	1731	74.2
19-Jan-18	8:00	Cloudy	23745	2.5992	2.6947	11174.42	11198.42	24.00	1.16	1.16	1.16	1667	57.3
25-Jan-18	8:00	Fine	23963	2.6693	2.7692	11201.47	11225.47	24.00	1.16	1.16	1.16	1671	59.8

Report on 1-hour TSP monitoring

Action Level ( $\mu\text{g}/\text{m}^3$ ) - 320.1

Limit Level ( $\mu\text{g}/\text{m}^3$ ) - 500

Date	Sampling Time	Weather Condition	Filter paper no.	Filter Weight, g		Elapse Time, hr		Sampling Time, hr	Flow Rate, $\text{m}^3/\text{min}$			Total Volume, $\text{m}^3$	TSP Level, $\mu\text{g}/\text{m}^3$
				Initial	Final	Initial	Final		Initial, $Q_{si}$	Final, $Q_{sf}$	Average		
29-Dec-17	8:10	Fine	23546	2.6167	2.6331	11090.42	11091.42	1.00	1.19	1.19	1.19	71	229.5
29-Dec-17	9:55	Fine	23667	2.6626	2.6702	11091.42	11092.42	1.00	1.19	1.19	1.19	71	106.3
29-Dec-17	10:58	Fine	23675	2.6719	2.6781	11092.42	11093.42	1.00	1.19	1.19	1.19	71	86.8
4-Jan-18	8:15	Fine	23518	2.6168	2.6214	11117.42	11118.42	1.00	1.19	1.19	1.19	71	64.5
4-Jan-18	9:25	Fine	23794	2.6114	2.6172	11118.42	11119.42	1.00	1.19	1.19	1.19	71	81.3
4-Jan-18	10:35	Fine	23771	2.6121	2.6173	11119.42	11120.42	1.00	1.19	1.19	1.19	71	72.9
10-Jan-18	9:15	Cloudy	23866	2.6637	2.6676	11144.42	11145.42	1.00	1.20	1.20	1.20	72	54.0
10-Jan-18	10:50	Cloudy	23865	2.6583	2.6605	11145.42	11146.42	1.00	1.20	1.20	1.20	72	30.5
10-Jan-18	13:00	Cloudy	23841	2.6715	2.6764	11146.42	11147.42	1.00	1.20	1.20	1.20	72	67.9
15-Jan-18	8:15	Fine	23851	2.6694	2.6768	11171.42	11172.42	1.00	1.20	1.20	1.20	72	103.1
15-Jan-18	10:05	Fine	23849	2.6717	2.6809	11172.42	11173.42	1.00	1.20	1.20	1.20	72	128.1
15-Jan-18	13:00	Fine	23842	2.6463	2.6522	11173.42	11174.42	1.00	1.20	1.20	1.20	72	82.2
20-Jan-18	8:13	Cloudy	23981	2.6771	2.6828	11198.42	11199.42	1.00	1.16	1.16	1.16	69	82.1
20-Jan-18	9:15	Cloudy	23975	2.6626	2.6688	11199.42	11200.42	1.00	1.16	1.16	1.16	69	89.3
20-Jan-18	10:17	Cloudy	23961	2.6599	2.6667	11200.42	11201.42	1.00	1.16	1.16	1.16	69	97.9
26-Jan-18	8:45	Fine	24049	2.6894	2.6997	11225.47	11226.47	1.00	1.16	1.16	1.16	70	147.9
26-Jan-18	9:58	Fine	24045	2.6797	2.6882	11226.47	11227.47	1.00	1.16	1.16	1.16	70	122.1
26-Jan-18	11:00	Fine	24039	2.6799	2.6869	11227.47	11228.47	1.00	1.16	1.16	1.16	70	100.5



Location: CMA2a - Causeway Bay Community Centre

Report on 24-hour TSP monitoring  
Action Level ( $\mu\text{g}/\text{m}^3$ ) - 169.5  
Limit Level ( $\mu\text{g}/\text{m}^3$ ) - 260

Date	Sampling Time	Weather Condition	Filter paper no.	Filter Weight, g		Elapse Time, hr		Sampling Time, hr	Flow Rate, $\text{m}^3/\text{min}$			Total Volume, $\text{m}^3$	TSP Level, $\mu\text{g}/\text{m}^3$
				Initial	Final	Initial	Final		Initial, $Q_{si}$	Final, $Q_{sf}$	Average		
28-Dec-17	8:00	Fine	23557	2.6131	2.7735	20638.30	20662.30	24.00	1.30	1.30	1.30	1873	85.6
3-Jan-18	8:00	Fine	23625	2.6885	2.8190	20665.30	20689.30	24.00	1.18	1.18	1.18	1699	76.8
9-Jan-18	8:00	Cloudy	23774	2.6066	2.7081	20692.30	20716.30	24.00	1.32	1.32	1.32	1899	53.5
13-Jan-18	8:00	Fine	23834	2.6669	2.8481	20719.30	20743.30	24.00	1.32	1.31	1.31	1892	95.8
19-Jan-18	8:00	Cloudy	23744	2.6053	2.7105	20746.30	20770.30	24.00	1.18	1.18	1.18	1698	62.0
25-Jan-18	8:00	Fine	23964	2.6528	2.7819	20773.30	20797.30	24.00	1.18	1.18	1.18	1703	75.8

Report on 1-hour TSP monitoring  
Action Level ( $\mu\text{g}/\text{m}^3$ ) - 323.4  
Limit Level ( $\mu\text{g}/\text{m}^3$ ) - 500

Date	Sampling Time	Weather Condition	Filter paper no.	Filter Weight, g		Elapse Time, hr		Sampling Time, hr	Flow Rate, $\text{m}^3/\text{min}$			Total Volume, $\text{m}^3$	TSP Level, $\mu\text{g}/\text{m}^3$
				Initial	Final	Initial	Final		Initial, $Q_{si}$	Final, $Q_{sf}$	Average		
29-Dec-17	8:15	Fine	23547	2.6138	2.6200	20662.30	20663.30	1.00	1.24	1.24	1.24	74	83.3
29-Dec-17	9:50	Fine	23613	2.6035	2.6101	20663.30	20664.30	1.00	1.30	1.30	1.30	78	84.6
29-Dec-17	10:53	Fine	23435	2.6285	2.6345	20664.30	20665.30	1.00	1.18	1.18	1.18	71	84.7
4-Jan-18	8:15	Fine	23511	2.6007	2.6041	20689.30	20690.30	1.00	1.30	1.30	1.30	78	43.7
4-Jan-18	9:25	Fine	23770	2.6285	2.6320	20690.30	20691.30	1.00	1.18	1.18	1.18	71	49.5
4-Jan-18	10:35	Fine	23788	2.5896	2.5925	20691.30	20692.30	1.00	1.18	1.18	1.18	71	41.0
10-Jan-18	9:10	Cloudy	23763	2.6169	2.6231	20716.30	20717.30	1.00	1.32	1.32	1.32	79	78.6
10-Jan-18	10:58	Cloudy	23514	2.6029	2.6091	20717.30	20718.30	1.00	1.32	1.32	1.32	79	78.6
10-Jan-18	13:00	Cloudy	23835	2.6757	2.6799	20718.30	20719.30	1.00	1.32	1.32	1.32	79	53.2
15-Jan-18	8:20	Fine	23850	2.6757	2.6821	20743.30	20744.30	1.00	1.31	1.31	1.31	78	81.6
15-Jan-18	10:10	Fine	23848	2.6855	2.6942	20744.30	20745.30	1.00	1.31	1.31	1.31	78	110.9
15-Jan-18	13:00	Fine	23829	2.6626	2.6718	20745.30	20746.30	1.00	1.31	1.31	1.31	78	117.3
20-Jan-18	8:15	Cloudy	23958	2.6705	2.6747	20770.30	20771.30	1.00	1.18	1.18	1.18	71	59.4
20-Jan-18	9:20	Cloudy	23976	2.6503	2.6564	20771.30	20772.30	1.00	1.18	1.18	1.18	71	86.3
20-Jan-18	10:30	Cloudy	23970	2.6607	2.6667	20772.30	20773.30	1.00	1.18	1.18	1.18	71	84.8
26-Jan-18	8:50	Fine	24021	2.6853	2.6902	20797.30	20798.30	1.00	1.18	1.18	1.18	71	69.1
26-Jan-18	9:55	Fine	24024	2.6896	2.6994	20798.30	20799.30	1.00	1.18	1.18	1.18	71	138.1
26-Jan-18	11:00	Fine	24040	2.6834	2.6905	20799.30	20800.30	1.00	1.12	1.12	1.12	67	105.5



Location: CMA3a - CWB PRE Site Office Area

Report on 24-hour TSP monitoring

Action Level ( $\mu\text{g}/\text{m}^3$ ) - 171

Limit Level ( $\mu\text{g}/\text{m}^3$ ) - 260

Date	Sampling Time	Weather Condition	Filter paper no.	Filter Weight, g		Elapse Time, hr		Sampling Time, hr	Flow Rate, $\text{m}^3/\text{min}$			Total Volume, $\text{m}^3$	TSP Level, $\mu\text{g}/\text{m}^3$
				Initial	Final	Initial	Final		Initial, $Q_{si}$	Final, $Q_{sf}$	Average		
28-Dec-17	8:00	Fine	23564	2.6196	2.7970	8132.25	8156.25	24.00	1.00	1.00	1.00	1445	122.8
3-Jan-18	8:00	Fine	23655	2.6595	2.7849	8159.26	8183.26	24.00	1.00	1.00	1.00	1442	87.0
9-Jan-18	8:00	Cloudy	23782	2.6297	2.7225	8186.26	8210.26	24.00	1.03	1.02	1.02	1475	62.9
13-Jan-18	8:00	Fine	23820	2.5982	2.7493	8213.26	8237.26	24.00	1.02	1.02	1.02	1467	103.0
19-Jan-18	8:00	Cloudy	23754	2.6139	2.7077	8240.29	8264.29	24.00	1.06	1.05	1.05	1519	61.8
25-Jan-18	8:00	Fine	23965	2.6443	2.7688	8267.31	8291.31	24.00	1.06	1.06	1.06	1524	81.7

Report on 1-hour TSP monitoring

Action Level ( $\mu\text{g}/\text{m}^3$ ) - 311.3

Limit Level ( $\mu\text{g}/\text{m}^3$ ) - 500

Date	Sampling Time	Weather Condition	Filter paper no.	Filter Weight, g		Elapse Time, hr		Sampling Time, hr	Flow Rate, $\text{m}^3/\text{min}$			Total Volume, $\text{m}^3$	TSP Level, $\mu\text{g}/\text{m}^3$
				Initial	Final	Initial	Final		Initial, $Q_{si}$	Final, $Q_{sf}$	Average		
29-Dec-17	8:02	Fine	23548	2.6097	2.6155	8156.25	8157.25	1.00	1.00	1.00	1.00	60	96.3
29-Dec-17	9:40	Fine	23668	2.6647	2.6709	8157.25	8158.25	1.00	1.00	1.00	1.00	60	103.0
29-Dec-17	13:00	Fine	23665	2.6803	2.6874	8158.25	8159.25	1.00	1.00	1.00	1.00	60	117.9
4-Jan-18	8:02	Fine	23519	2.6215	2.6270	8183.26	8184.26	1.00	1.00	1.00	1.00	60	91.6
4-Jan-18	9:15	Fine	23795	2.5941	2.5989	8184.26	8185.26	1.00	1.00	1.00	1.00	60	80.0
4-Jan-18	10:25	Fine	23789	2.5878	2.5931	8185.26	8186.26	1.00	1.00	1.00	1.00	60	88.3
10-Jan-18	9:00	Cloudy	23764	2.6112	2.6149	8210.26	8211.26	1.00	1.02	1.02	1.02	61	60.4
10-Jan-18	10:25	Cloudy	23863	2.6419	2.6457	8211.26	8212.26	1.00	1.02	1.02	1.02	61	62.1
10-Jan-18	13:00	Cloudy	23838	2.6652	2.6696	8212.26	8213.26	1.00	1.02	1.02	1.02	61	71.9
15-Jan-18	8:05	Fine	23852	2.6661	2.6721	8237.26	8238.26	1.00	1.01	1.01	1.01	61	98.9
15-Jan-18	9:50	Fine	23828	2.6663	2.6732	8238.26	8239.26	1.00	1.01	1.01	1.01	61	113.7
15-Jan-18	13:00	Fine	23843	2.6583	2.6662	8239.26	8240.26	1.00	1.01	1.01	1.01	61	130.2
20-Jan-18	8:02	Cloudy	23982	2.6523	2.6586	8264.31	8265.31	1.00	1.05	1.05	1.05	63	99.6
20-Jan-18	9:05	Cloudy	23959	2.6546	2.6603	8265.31	8266.31	1.00	1.05	1.05	1.05	63	90.1
20-Jan-18	10:07	Cloudy	23971	2.6579	2.6660	8266.31	8267.31	1.00	1.05	1.05	1.05	63	128.0
26-Jan-18	8:30	Fine	24052	2.6731	2.6784	8291.31	8292.31	1.00	1.06	1.06	1.06	64	83.4
26-Jan-18	9:45	Fine	24046	2.6622	2.6677	8292.31	8293.31	1.00	1.06	1.06	1.06	64	86.6
26-Jan-18	10:55	Fine	24025	2.6891	2.6973	8293.31	8294.31	1.00	1.06	1.06	1.06	64	129.1

Location: CMA4a - SPCA

Report on 24-hour TSP monitoring  
Action Level ( $\mu\text{g}/\text{m}^3$ ) - 171.2  
Limit Level ( $\mu\text{g}/\text{m}^3$ ) - 260

Date	Sampling Time	Weather Condition	Filter paper no.	Filter Weight, g		Elapse Time, hr		Sampling Time, hr	Flow Rate, $\text{m}^3/\text{min}$			Total Volume, $\text{m}^3$	TSP Level, $\mu\text{g}/\text{m}^3$
				Initial	Final	Initial	Final		Initial, $Q_{si}$	Final, $Q_{sf}$	Average		
28-Dec-17	8:00	Fine	23565	2.6146	2.7834	24947.19	24971.19	24.00	1.26	1.26	1.26	1811	93.2
3-Jan-18	8:00	Fine	23656	2.6469	2.7612	24974.19	24998.19	24.00	1.26	1.26	1.26	1809	63.2
9-Jan-18	8:00	Cloudy	23783	2.6143	2.7133	25001.19	25025.19	24.00	1.33	1.33	1.33	1915	51.7
13-Jan-18	8:00	Fine	23836	2.6692	2.7821	25028.19	25052.19	24.00	1.27	1.27	1.27	1827	61.8
19-Jan-18	8:00	Cloudy	23753	2.6267	2.7141	25055.19	25079.19	24.00	1.21	1.21	1.21	1748	50.0
25-Jan-18	8:00	Fine	23968	2.6543	2.7471	25082.23	25106.23	24.00	1.22	1.22	1.22	1752	53.0

Report on 1-hour TSP monitoring  
Action Level ( $\mu\text{g}/\text{m}^3$ ) - 312.5  
Limit Level ( $\mu\text{g}/\text{m}^3$ ) - 500

Date	Sampling Time	Weather Condition	Filter paper no.	Filter Weight, g		Elapse Time, hr		Sampling Time, hr	Flow Rate, $\text{m}^3/\text{min}$			Total Volume, $\text{m}^3$	TSP Level, $\mu\text{g}/\text{m}^3$
				Initial	Final	Initial	Final		Initial, $Q_{si}$	Final, $Q_{sf}$	Average		
29-Dec-17	8:05	Fine	23611	2.6214	2.6251	24971.19	24972.19	1.00	1.37	1.37	1.37	82	45.0
29-Dec-17	9:40	Fine	23612	2.6123	2.6183	24972.19	24973.19	1.00	1.37	1.37	1.37	82	73.0
29-Dec-17	13:00	Fine	23666	2.6703	2.6749	24973.19	24974.19	1.00	1.26	1.26	1.26	75	61.0
4-Jan-18	8:05	Fine	23630	2.6797	2.6837	24998.19	24999.19	1.00	1.26	1.26	1.26	75	53.1
4-Jan-18	9:10	Fine	23796	2.5968	2.5986	24999.19	25000.19	1.00	1.26	1.26	1.26	75	23.9
4-Jan-18	10:20	Fine	23790	2.6060	2.6100	25000.19	25001.19	1.00	1.26	1.26	1.26	75	53.1
10-Jan-18	8:45	Cloudy	23760	2.6291	2.6316	25025.19	25026.19	1.00	1.27	1.27	1.27	76	32.8
10-Jan-18	10:30	Cloudy	23867	2.6357	2.6377	25026.19	25027.19	1.00	1.27	1.27	1.27	76	26.2
10-Jan-18	13:00	Cloudy	23839	2.6601	2.6624	25027.19	25028.19	1.00	1.27	1.27	1.27	76	30.2
15-Jan-18	8:02	Fine	23853	2.6554	2.6613	25052.19	25053.19	1.00	1.26	1.26	1.26	76	77.8
15-Jan-18	9:35	Fine	23827	2.6538	2.6607	25053.19	25054.19	1.00	1.26	1.26	1.26	76	91.0
15-Jan-18	13:00	Fine	23844	2.6639	2.6700	25054.19	25055.19	1.00	1.26	1.26	1.26	76	80.5
20-Jan-18	8:05	Cloudy	23957	2.6693	2.6729	25079.19	25080.19	1.00	1.21	1.21	1.21	73	49.4
20-Jan-18	9:10	Cloudy	23977	2.6658	2.6696	25080.19	25081.19	1.00	1.21	1.21	1.21	73	52.2
20-Jan-18	10:15	Cloudy	23972	2.6501	2.6550	25081.19	25082.19	1.00	1.21	1.21	1.21	73	67.3
26-Jan-18	8:30	Fine	24020	2.6504	2.6556	25106.23	25107.23	1.00	1.22	1.22	1.22	73	71.2
26-Jan-18	9:45	Fine	24023	2.7013	2.7066	25107.23	25108.23	1.00	1.22	1.22	1.22	73	72.6
26-Jan-18	10:56	Fine	24041	2.6643	2.6701	25108.23	25109.23	1.00	1.22	1.22	1.22	73	79.4



Location: CMA5b - Pedestrian Plaza

Report on 24-hour TSP monitoring

Action Level ( $\mu\text{g}/\text{m}^3$ ) - 181

Limit Level ( $\mu\text{g}/\text{m}^3$ ) - 260

Date	Sampling Time	Weather Condition	Filter paper no.	Filter Weight, g		Elapse Time, hr		Sampling Time, hr	Flow Rate, $\text{m}^3/\text{min}$			Total Volume, $\text{m}^3$	TSP Level, $\mu\text{g}/\text{m}^3$
				Initial	Final	Initial	Final		Initial, $Q_{si}$	Final, $Q_{sf}$	Average		
28-Dec-17	8:00	Fine	23384	2.6723	2.7978	9551.31	9575.31	24.00	0.70	0.70	0.70	1009	124.4
3-Jan-18	8:00	Fine	23382	2.6700	2.8342	9578.31	9602.31	24.00	0.84	0.84	0.84	1213	135.3
9-Jan-18	8:00	Cloudy	23785	2.6029	2.7596	9605.31	9629.31	24.00	0.87	0.86	0.87	1248	125.6
13-Jan-18	8:00	Fine	23840	2.6625	2.9536	9632.31	9656.31	24.00	1.14	1.11	1.12	1620	179.7
19-Jan-18	8:00	Cloudy	23742	2.5905	2.7232	9659.31	9683.31	24.00	0.81	0.81	0.81	1166	113.8
25-Jan-18	8:00	Fine	23962	2.6524	2.8314	9686.36	9710.36	24.00	0.87	0.87	0.87	1255	142.7

Report on 1-hour TSP monitoring

Action Level ( $\mu\text{g}/\text{m}^3$ ) - 332

Limit Level ( $\mu\text{g}/\text{m}^3$ ) - 500

Date	Sampling Time	Weather Condition	Filter paper no.	Filter Weight, g		Elapse Time, hr		Sampling Time, hr	Flow Rate, $\text{m}^3/\text{min}$			Total Volume, $\text{m}^3$	TSP Level, $\mu\text{g}/\text{m}^3$
				Initial	Final	Initial	Final		Initial, $Q_{si}$	Final, $Q_{sf}$	Average		
29-Dec-17	8:40	Fine	23674	2.6932	2.7068	9575.31	9576.31	1.00	0.84	0.84	0.84	51	268.3
29-Dec-17	10:15	Fine	23614	2.6026	2.6244	9576.31	9577.31	1.00	0.84	0.84	0.84	51	430.0
29-Dec-17	13:00	Fine	23664	2.6545	2.6722	9577.31	9578.31	1.00	0.99	0.99	0.99	59	298.3
4-Jan-18	8:35	Fine	23512	2.5953	2.6010	9602.31	9603.31	1.00	0.84	0.84	0.84	51	112.8
4-Jan-18	9:45	Fine	23792	2.5976	2.6039	9603.31	9604.31	1.00	0.84	0.84	0.84	51	124.7
4-Jan-18	10:55	Fine	23787	2.5961	2.6020	9604.31	9605.31	1.00	0.84	0.84	0.84	51	116.8
10-Jan-18	8:15	Cloudy	23759	2.6093	2.6129	9629.31	9630.31	1.00	0.72	0.72	0.72	43	83.7
10-Jan-18	9:45	Cloudy	23886	2.6716	2.6793	9630.31	9631.31	1.00	0.86	0.86	0.86	52	148.8
10-Jan-18	13:00	Cloudy	23860	2.6472	2.6519	9631.31	9632.31	1.00	0.86	0.86	0.86	52	90.8
15-Jan-18	9:00	Fine	23832	2.6698	2.6845	9656.31	9657.31	1.00	0.85	0.85	0.85	51	287.2
15-Jan-18	10:45	Fine	23845	2.6754	2.6900	9657.31	9658.31	1.00	0.85	0.85	0.85	51	285.3
15-Jan-18	13:00	Fine	23755	2.6064	2.6216	9658.31	9659.31	1.00	0.85	0.85	0.85	51	297.0
20-Jan-18	8:30	Cloudy	23980	2.6542	2.6650	9683.36	9684.36	1.00	0.87	0.87	0.87	52	207.4
20-Jan-18	9:35	Cloudy	23960	2.6642	2.6701	9684.36	9685.36	1.00	0.75	0.75	0.75	45	131.0
20-Jan-18	10:40	Cloudy	23969	2.6765	2.6850	9685.36	9686.36	1.00	0.87	0.87	0.87	52	163.3
26-Jan-18	8:05	Fine	24019	2.6712	2.6809	9710.36	9711.36	1.00	0.87	0.87	0.87	52	185.5
26-Jan-18	9:20	Fine	24022	2.6763	2.6848	9711.36	9712.36	1.00	0.87	0.87	0.87	52	162.5
26-Jan-18	10:25	Fine	24044	2.6763	2.6903	9712.36	9713.36	1.00	0.87	0.87	0.87	52	267.7



Location: CMA6a - WD2 PRE Office

Report on 24-hour TSP monitoring

Action Level - 187.3  $\mu\text{g}/\text{m}^3$

Limit Level - 260  $\mu\text{g}/\text{m}^3$

Date	Sampling Time	Weather Condition	Filter paper no.	Filter Weight, g		Elapse Time, hr		Sampling Time, hr	Flow Rate, $\text{m}^3/\text{min}$			Total Volume, $\text{m}^3$	TSP Level, $\mu\text{g}/\text{m}^3$
				Initial	Final	Initial	Final		Initial, $Q_{si}$	Final, $Q_{sf}$	Average		
28-Dec-17	8:00	Fine	23560	2.6135	2.7612	3256.23	3280.23	24.00	1.07	1.07	1.07	1541	95.8
3-Jan-18	8:00	Fine	23383	2.6719	2.7834	3283.23	3307.23	24.00	1.07	1.07	1.07	1538	72.5
9-Jan-18	8:00	Cloudy	23784	2.6164	2.7002	3310.24	3334.24	24.00	1.09	1.09	1.09	1570	53.4
13-Jan-18	8:00	Fine	23538	2.6184	2.7482	3337.25	3361.25	24.00	1.09	1.08	1.08	1562	83.1
19-Jan-18	8:00	Cloudy	23743	2.6196	2.7017	3364.29	3388.29	24.00	0.96	0.96	0.96	1381	59.4
25-Jan-18	8:00	Fine	23956	2.6652	2.7104	3391.29	3415.29	24.00	0.83	0.83	0.83	1196	37.8

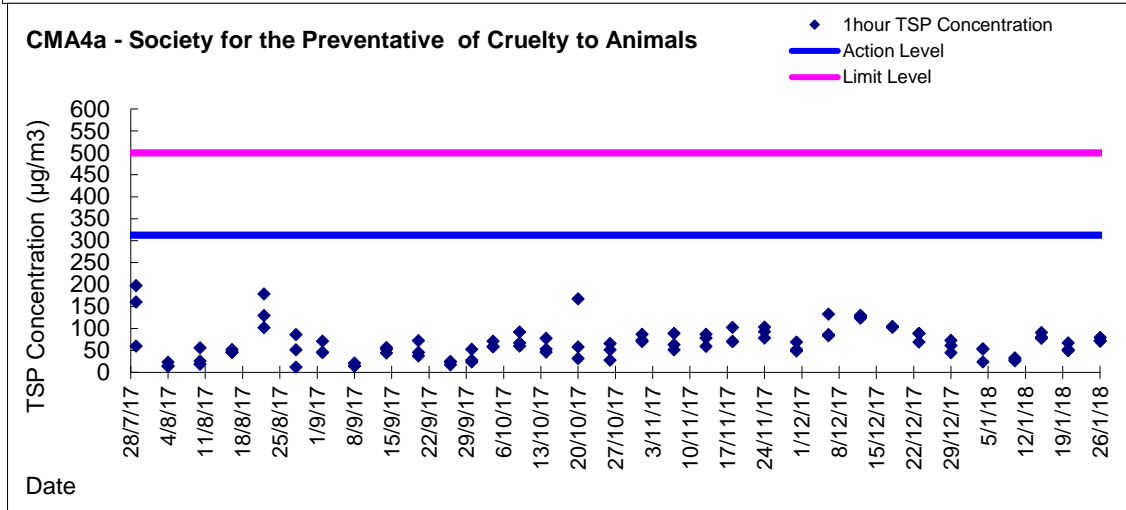
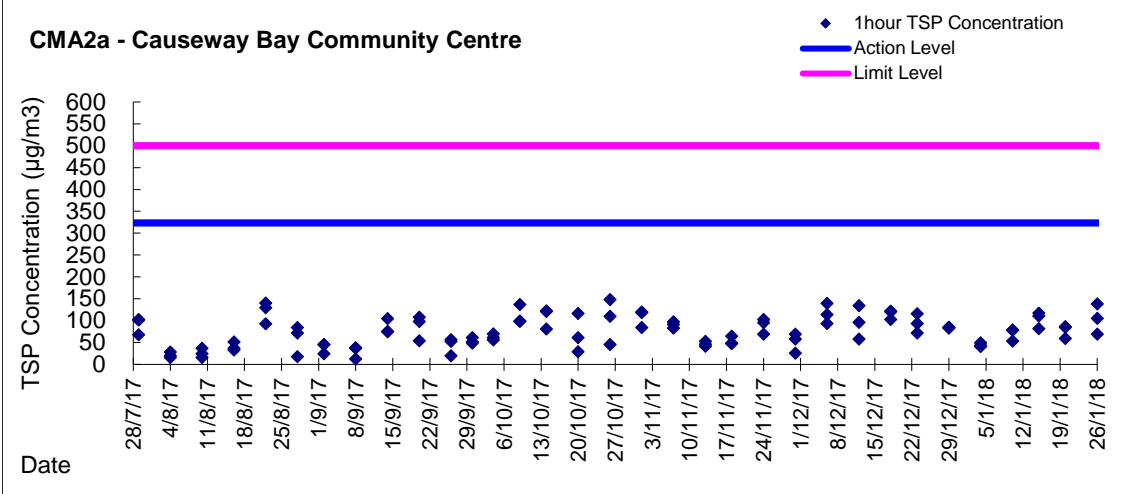
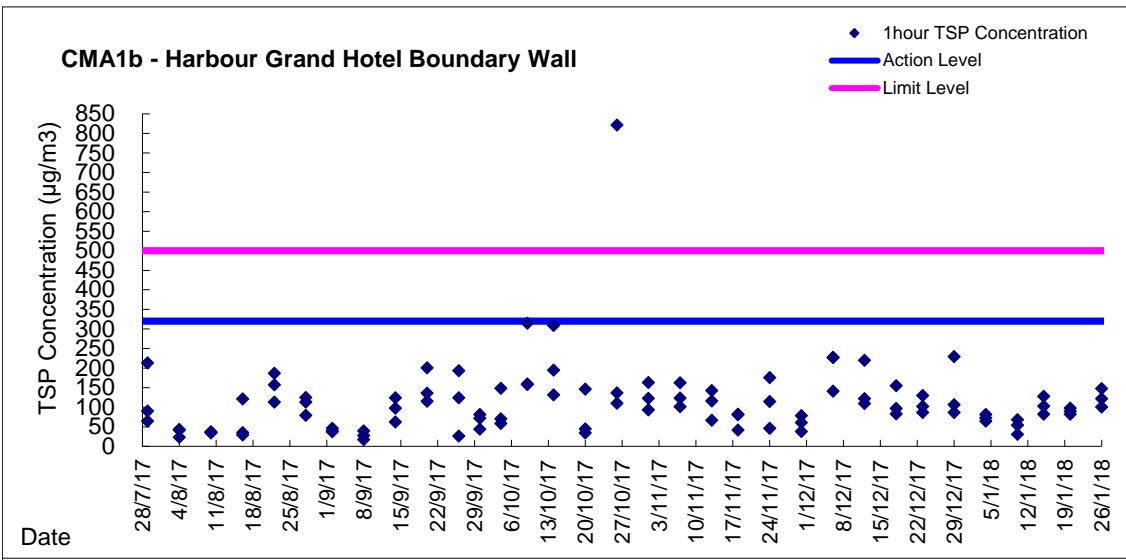
Report on 1-hour TSP monitoring

Action Level - 300.1  $\mu\text{g}/\text{m}^3$

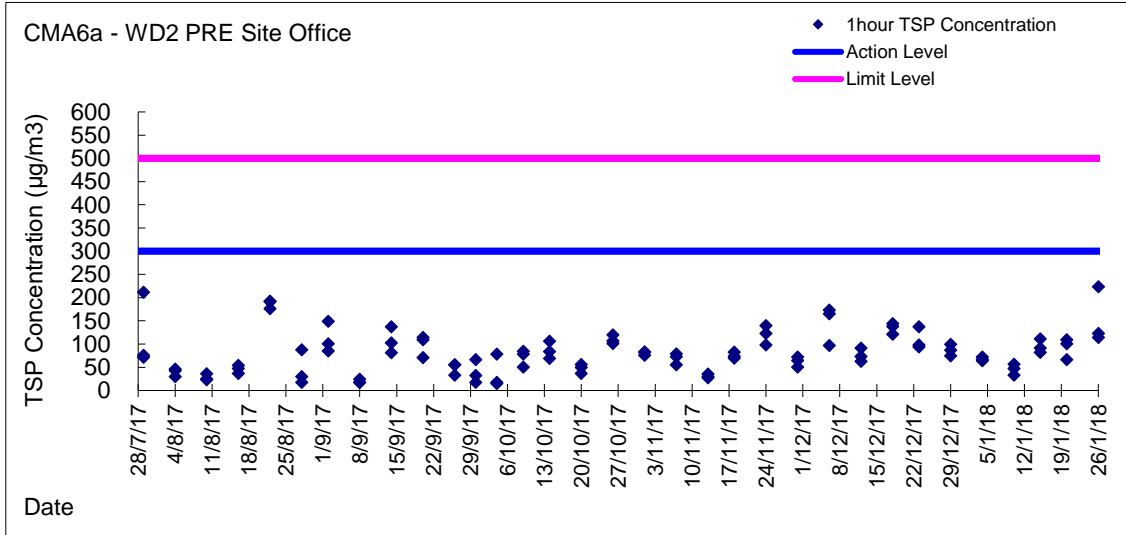
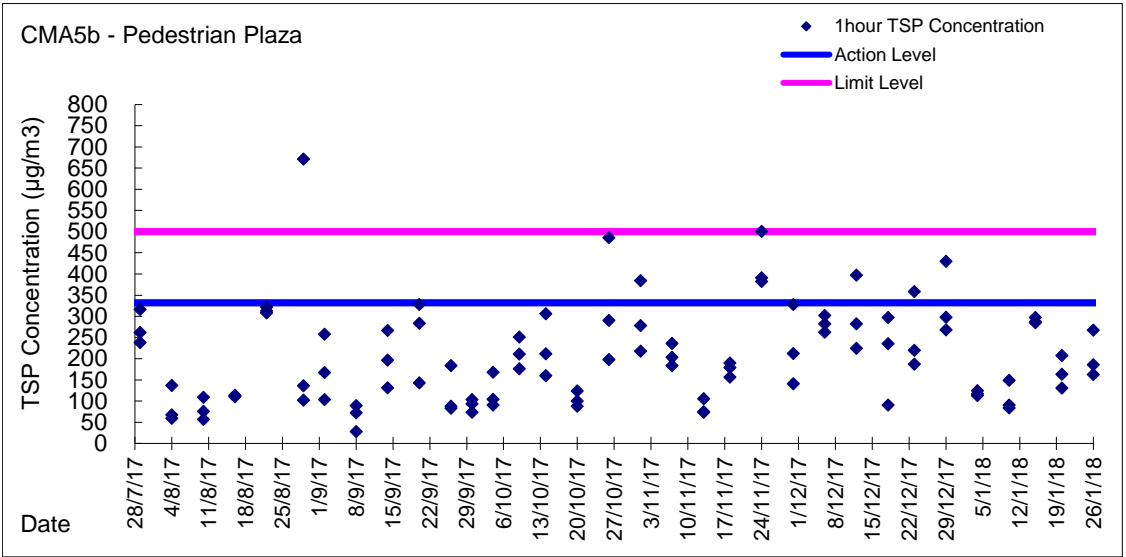
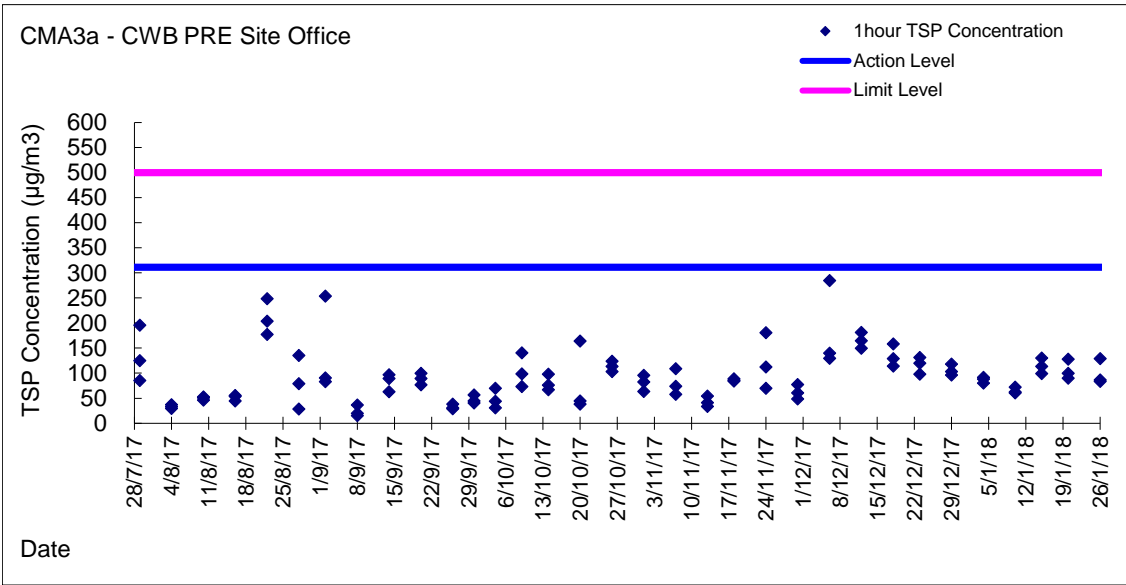
Limit Level - 500  $\mu\text{g}/\text{m}^3$

Date	Sampling Time	Weather Condition	Filter paper no.	Filter Weight, g		Elapse Time, hr		Sampling Time, hr	Flow Rate, $\text{m}^3/\text{min}$			Total Volume, $\text{m}^3$	TSP Level, $\mu\text{g}/\text{m}^3$
				Initial	Final	Initial	Final		Initial, $Q_{si}$	Final, $Q_{sf}$	Average		
29-Dec-17	8:40	Fine	23673	2.6515	2.6571	3280.23	3281.23	1.00	1.07	1.07	1.07	64	87.2
29-Dec-17	10:10	Fine	23616	2.6002	2.6066	3281.23	3282.23	1.00	1.07	1.07	1.07	64	99.7
29-Dec-17	13:00	Fine	23621	2.6864	2.6912	3282.23	3283.23	1.00	1.07	1.07	1.07	64	74.7
4-Jan-18	8:35	Fine	23513	2.6009	2.6050	3307.23	3308.23	1.00	1.07	1.07	1.07	64	64.0
4-Jan-18	9:50	Fine	23793	2.6097	2.6140	3308.23	3309.23	1.00	1.07	1.07	1.07	64	67.1
4-Jan-18	11:00	Fine	23772	2.6015	2.6061	3309.23	3310.23	1.00	1.07	1.07	1.07	64	71.8
10-Jan-18	8:15	Cloudy	23887	2.6716	2.6753	3334.25	3335.25	1.00	1.09	1.09	1.09	65	56.8
10-Jan-18	9:50	Cloudy	23870	2.6861	2.6881	3335.25	3336.25	1.00	1.02	1.02	1.02	61	32.7
10-Jan-18	13:00	Cloudy	23862	2.6543	2.6572	3336.25	3337.25	1.00	1.02	1.02	1.02	61	47.4
15-Jan-18	8:45	Fine	23830	2.6596	2.6668	3361.25	3362.25	1.00	1.08	1.08	1.08	65	111.3
15-Jan-18	10:30	Fine	23847	2.6702	2.6755	3362.25	3363.25	1.00	1.08	1.08	1.08	65	82.0
15-Jan-18	13:00	Fine	23757	2.6152	2.6211	3363.25	3364.25	1.00	1.08	1.08	1.08	65	91.2
20-Jan-18	8:15	Cloudy	23979	2.6665	2.6723	3388.29	3389.29	1.00	0.96	0.96	0.96	58	100.8
20-Jan-18	9:30	Cloudy	23974	2.6524	2.6587	3389.29	3390.29	1.00	0.96	0.96	0.96	58	109.5
20-Jan-18	10:45	Cloudy	23967	2.6478	2.6511	3390.29	3391.29	1.00	0.83	0.83	0.83	50	66.5
26-Jan-18	8:02	Fine	24051	2.6795	2.6866	3415.29	3416.29	1.00	0.96	0.96	0.96	58	122.8
26-Jan-18	9:25	Fine	24048	2.6823	2.6952	3416.29	3417.29	1.00	0.96	0.96	0.96	58	223.2
26-Jan-18	10:30	Fine	24043	2.6686	2.6752	3417.29	3418.29	1.00	0.96	0.96	0.96	58	114.2

Graphic Presentation of 1 hour TSP Result

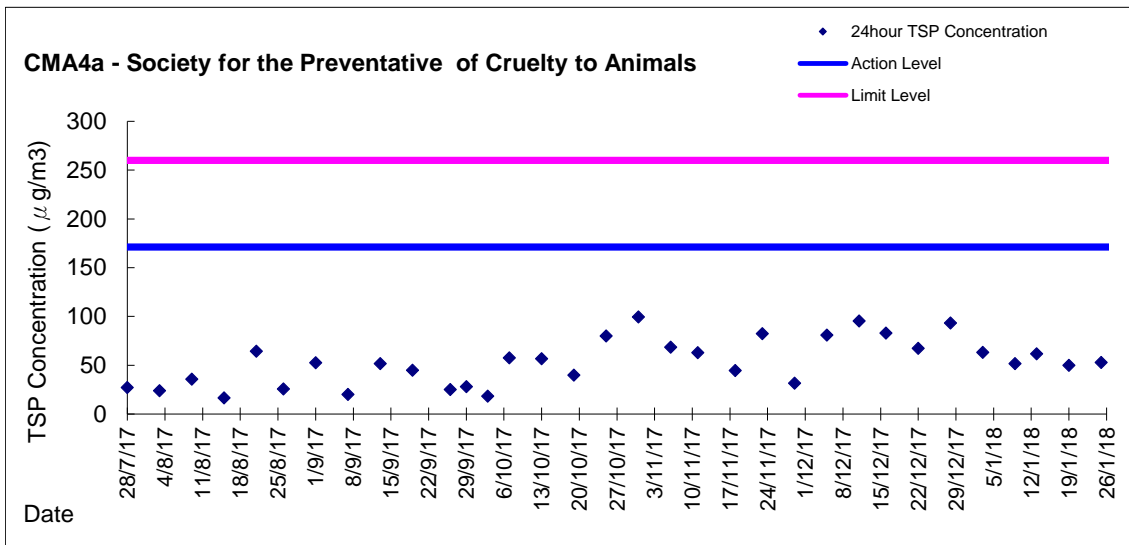
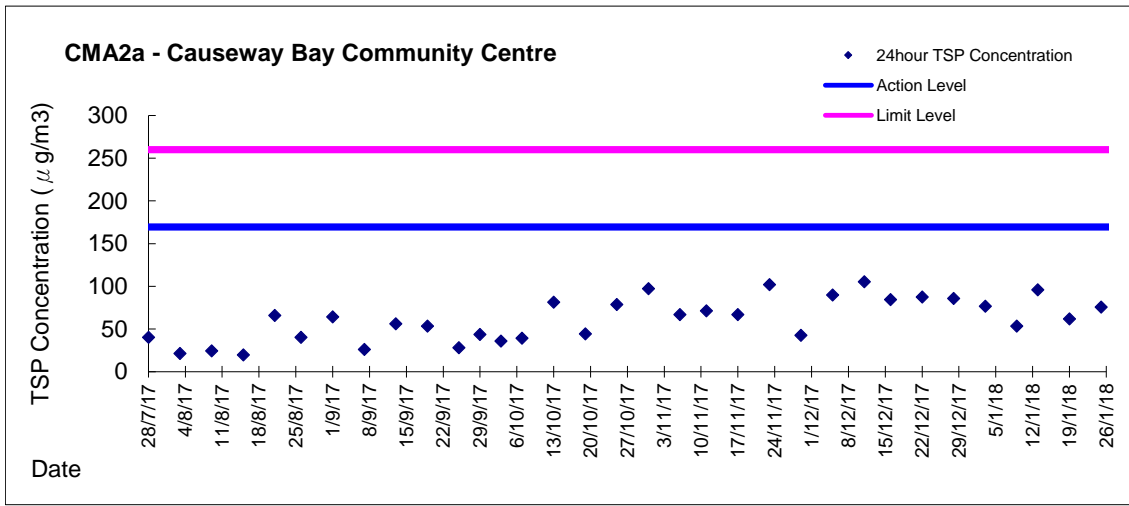
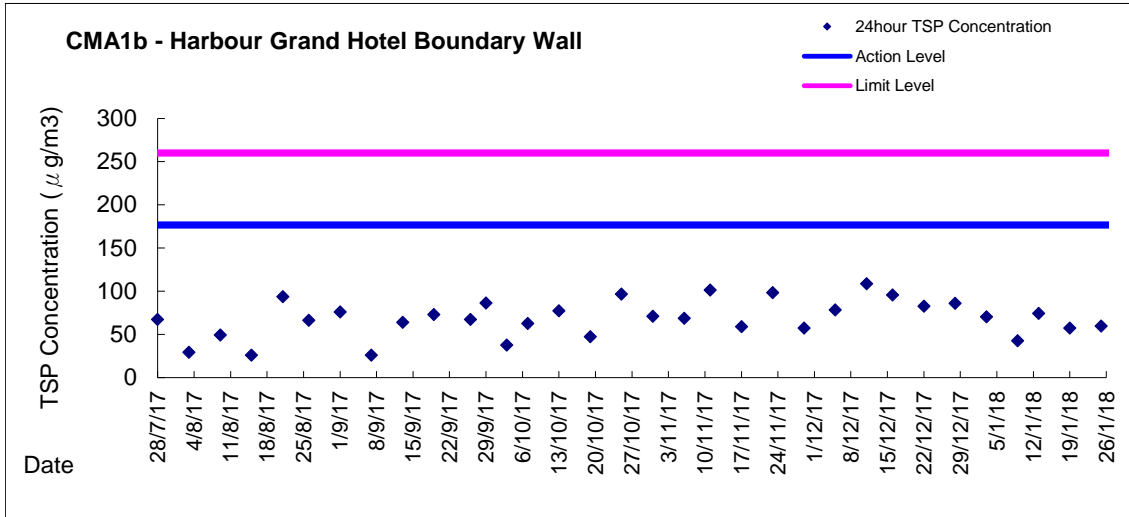


Graphic Presentation of 1 hour TSP Result





Graphic Presentation of 24 hour TSP Result



Graphic Presentation of 24 hour TSP Result

